

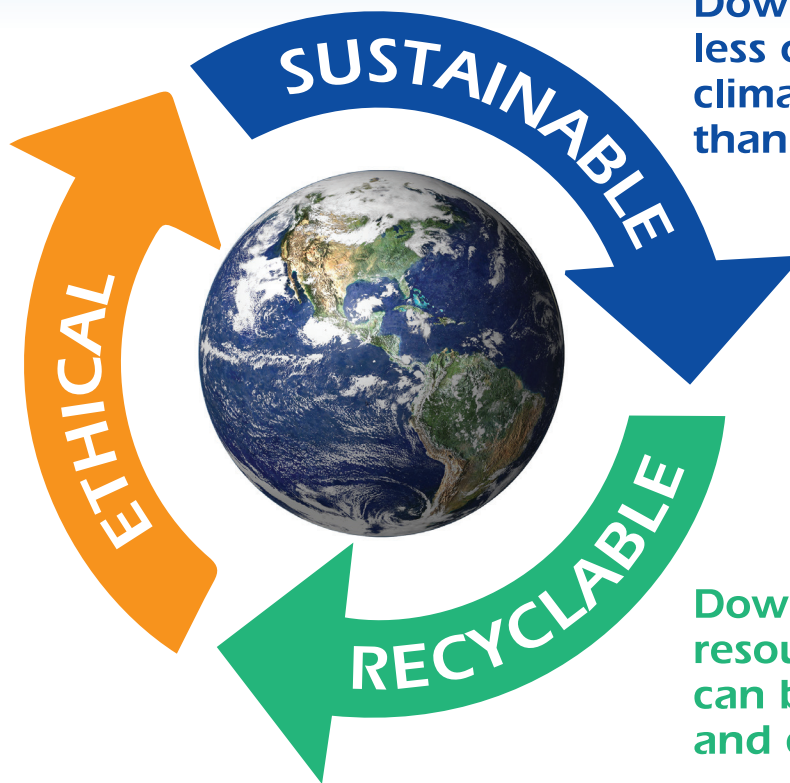
Down: Better Insulation. Better for the Environment.

International Down and Feather Bureau (IDFB) commissioned a Life Cycle Assessment from an independent third-party, Long Trail Sustainability, who specializes in product sustainability reports. The Life Cycle Assessment evaluates the environmental impact of down vs synthetic fill.

METHODOLOGY

The Life Cycle Assessment evaluated the impact of both down and polyester for this global study by analyzing 5 environmental categories using international primary and secondary data. The impact categories are human health, ecosystems, resources, cumulative energy demand and climate change.

Down from IDFB members is sourced as a byproduct from the food and agriculture industry.

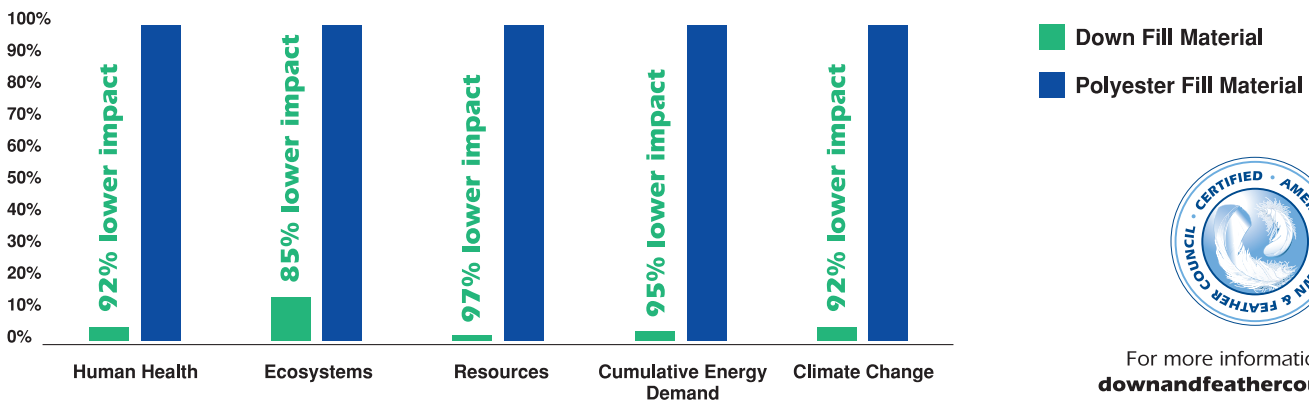


Down has 18 times less of an impact on climate change than polyester fill.

Down is a natural resource that can be reused and composted.

RESULTS

On a per ton basis, **down has 85% - 97% lower impacts** than polyester in all the impact categories analyzed.



For more information, visit downandfeathercouncil.com